

PARTS BREAKDOWN FOR HIGH AND LOW SPEED GEAR ASSEMBLIES

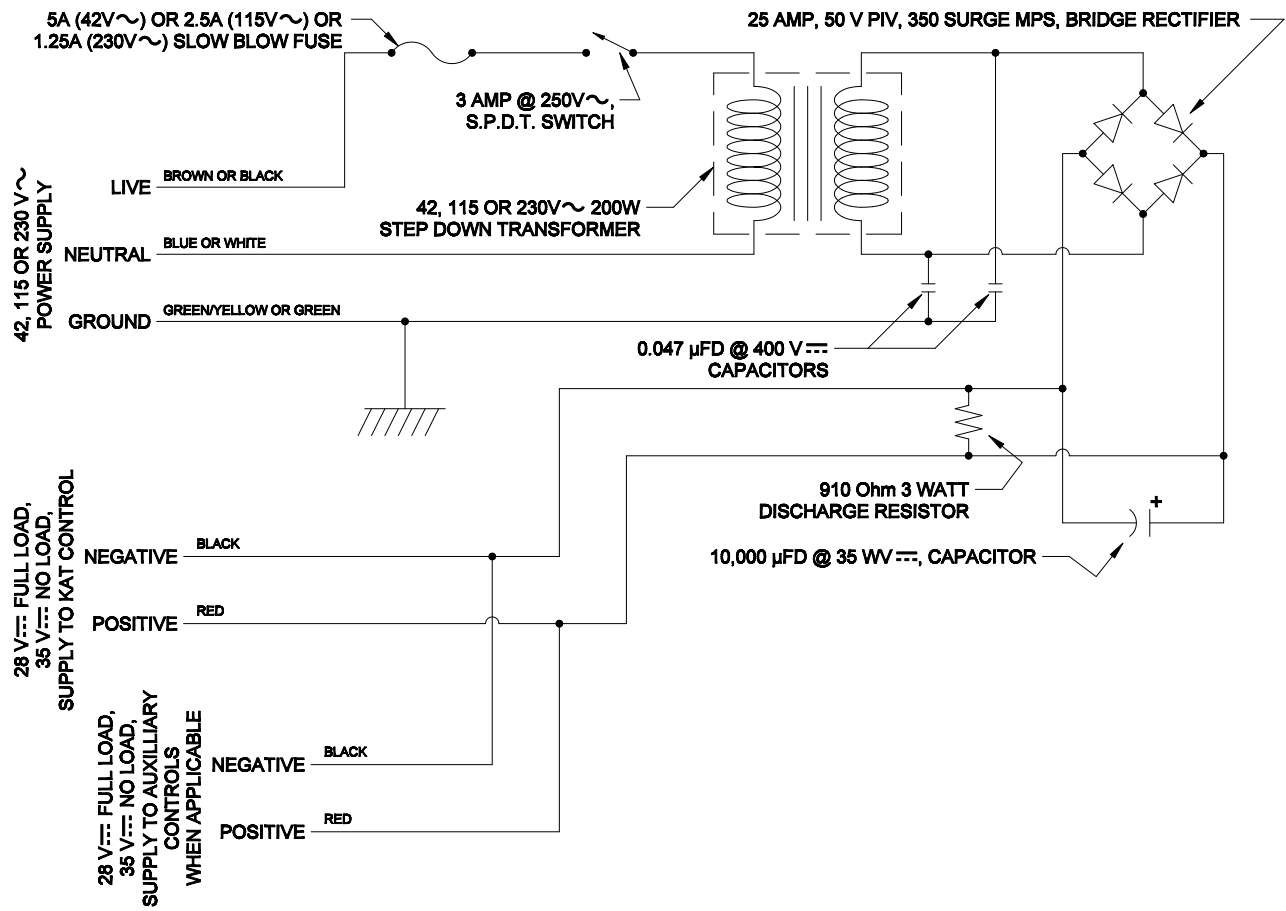
Refer to sketches on previous page.

ITEM	PART NUMBER	DESCRIPTION	QTY
120	GK-166-169	LOW SPEED GEAR TRAIN ASSEMBLY (ITEMS 121 TO 127)	
121	GK-166-171	PINION ON MOTOR SHAFT	1
122	GK-117-008	SPRING PIN, 1/8" x 3/4"	1
123	GK-166-229	IDLER GEAR COMPLETE (ITEMS 124 TO 126)	1
124	GK-166-174	IDLER GEAR	1
125	GK-166-127	IDLER GEAR BEARING	1
126	GK-104-050	SHOULDER SCREW, 1/2" x 1"	1
127	GK-109-052	HEXAGONAL NUTS, 5/16"-18	6
130	GK-166-153	HIGH SPEED GEAR TRAIN ASSEMBLY (ITEMS 131 TO 136)	
131	GK-166-130	IDLER GEAR COMPLETE (ITEMS 132 TO 134)	1
132	GK-166-129	IDLER GEAR	1
133	GK-166-127	IDLER GEAR BEARING	1
134	GK-104-050	SHOULDER SCREW, 1/2" x 1"	1
135	GK-166-128	PINION ON MOTOR SHAFT	1
136	GK-117-008	SPRING PIN, 1/8" x 3/4"	1

WARNING! The attachment of Low Speed or High Speed Gear Assemblies will result in the reversal of the carriage travel directions. I.e. what was Forward motion will become Reverse motion and visa versa once the gear assembly is installed. **Corrective measures must be taken if travel limit switches are installed.** The easiest way to restore the correct travel directions is to reverse the motor leads.

"KAT" CARRIAGE POWER SUPPLY SCHEMATIC

DRAWING NUMBER: GK-191-P-029



PARTS BREAK DOWN FOR A "KAT" LOWER HOUSING ASSEMBLY

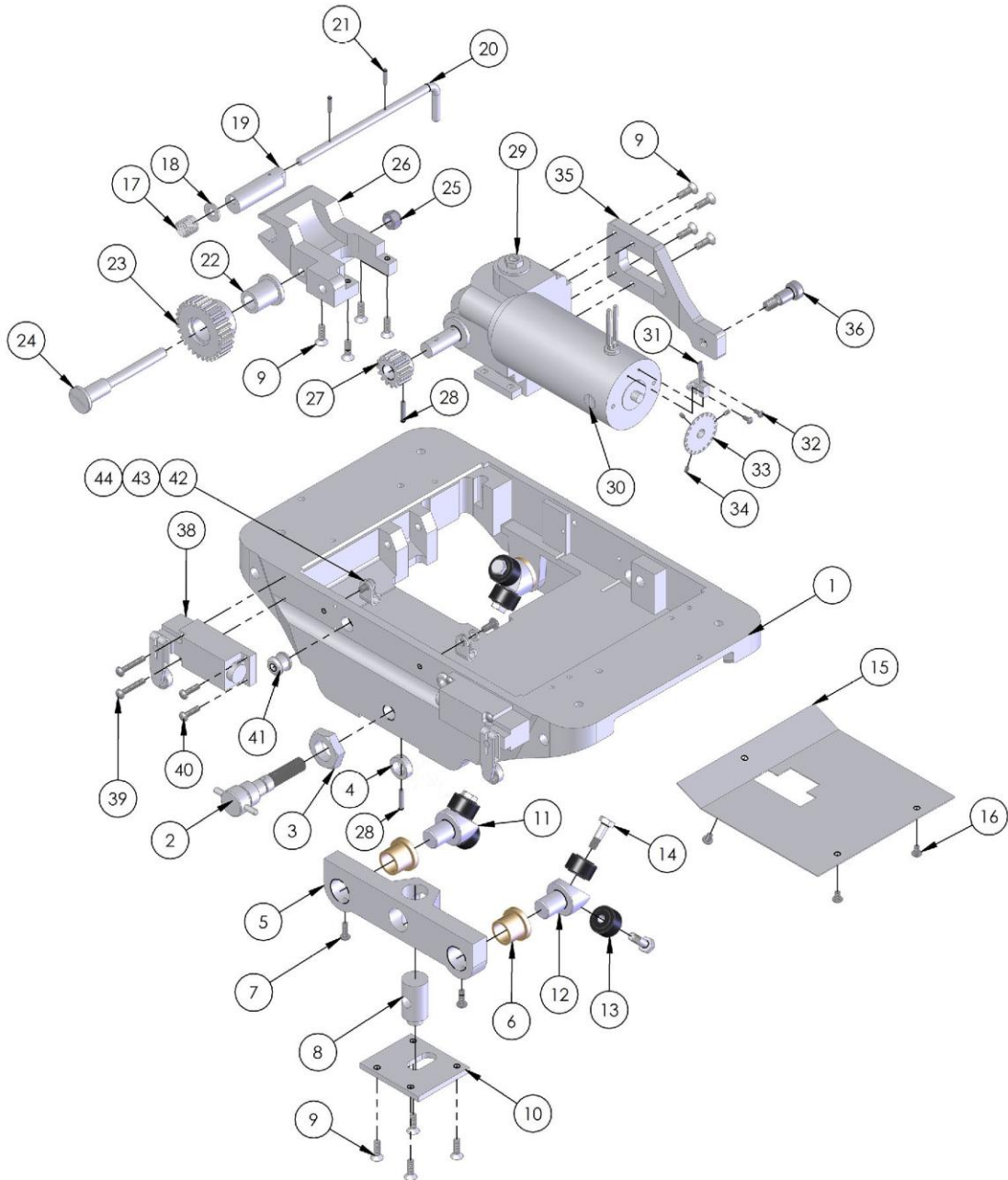
DRAWING NUMBER: GK-191-P-200-2B

ITEM	PART NUMBER	DESCRIPTION	QTY
1	GK-171-005	"KAT" LOWER HOUSING	1
2	GK-171-012	WHEEL ADJUSTMENT SCREW	1
3	GK-110-062	LOCK NUT	1
4	GK-171-102	WHEEL ADJUSTMENT COLLAR	1
	GK-171-003	ADJUSTABLE WHEEL HOUSING ASS'Y (ITEM 5 & 2 x ITEM 6)	1
5	GK-171-007	ADJUSTABLE WHEEL HOUSING	1
6	GK-165-009	WHEEL SHAFT BEARING	4
7	GK-112-050	8-32 x 1/2" ROUND HEAD SCREW	4
8	GK-171-008	WHEEL HOUSING PIVOT PIN	1
9	GK-105-050	10-32 x 5/8" FLAT HEAD LOCKING SCREW	12
10	GK-171-482	RETAINING PLATE	1
11	GK-165-154	HEAVY DUTY WHEEL ASSEMBLY	4
12	GK-166-289	HEAVY DUTY WHEEL SHAFT	4
13	GK-165-153	HEAVY DUTY WHEEL	8
14	GK-165-152	HEAVY DUTY WHEEL BOLT	8
15	GK-190-067	DUST COVER (OPTIONAL)	1
16	GK-112-089	8-32 x 1/4" ROUND HEAD SCREW (OPTIONAL)	3
17	GK-116-003	CAM SHAFT SPRING	1
18	GK-111-051	PLAIN WASHER, 1/4"	1
19	GK-165-015	CAM	1
20	GK-171-013	CAM SHAFT LEVER	1
21	GK-117-004	3/32" x 9/16" SPRING PIN	2
	GK-191-P-028	POWER UNIT ASSEMBLY (8 PCS ITEM 9 & ITEMS 22 TO 36)	1
	GK-165-034	DRIVE GEAR ASSEMBLY (ITEMS 22 TO 25)	1
22	GK-165-010	IDLER GEAR BEARING	1
23	GK-165-013	IDLER GEAR	1
24	GK-166-167	SHOULDER SCREW	1
25	GK-135-050	LOCK NUT, 5/16"-18	1
26	GK-165-008	CAM FORK	1
27	GK-165-012	MOTOR DRIVE PINION	1
28	GK-117-008	SPRING PIN 1/8" x 3/4"	1
29	GK-191-P-131	GEARHEAD & MOTOR ASSEMBLY, 2.7-88.4 ipm [6.7-224 cm/min.] (C/W ITEM 30)	1
	GK-191-P-133	GEARHEAD & MOTOR ASSEMBLY, 1-32.7 ipm [2.5-83.1 cm/min.] (C/W ITEM 30)	
	GK-191-P-271	GEARHEAD & MOTOR ASSEMBLY, 0.5-16.4 ipm [1.2-41.6 cm/min.] (C/W ITEM 30)	
30	GK-171-068-4	MOTOR BRUSHES (INCLUDED WITH ITEM 29)	2
31	GK-191-P-035	ENCODER SENSOR INCLUDING WIRING AND CONNECTOR	1
32	GK-112-060	ROUND HEAD SCREW, 4-40 x 1/4"	2
33	GK-191-P-038	SENSOR WHEEL	1
34	GK-106-063	SET SCREW, 4-40 x 3/16"	3
35	GK-171-011	MOTOR MOUNTING PLATE	1
36	GK-104-051	SHOULDER SCREW, 3/8" x 5/8"	1
37	GL-190-019	"PUSH TO TURN" - NAMEPLATE (NOT SHOWN ON DRAWING)	1

SPECIFY "KAT" MODEL NUMBER AND SERIAL NUMBER WHEN ORDERING PARTS.

PARTS BREAK DOWN FOR A "KAT" LOWER HOUSING ASSEMBLY

DRAWING NUMBER: GK-191-P-200-2B



THE FOLLOWING ITEMS ONLY APPLY TO CARRIAGES THAT HAVE BEEN FITTED WITH OPTIONAL LIMIT SWITCHES			
ITEM	PART NUMBER	DESCRIPTION	QTY
38	GK-191-P-059	LIMIT SWITCH	2
39	GK-112-063	ROUND HEAD SCREW 8-32 x 1"	4
40	GK-112-052	ROUND HEAD SCREW, 8-32 x 5/8"	4
41	GK-151-003	RUBBER GROMMET	2
42	GK-156-041	CABLE CLAMP	2
43	GK-111-068	FLAT WASHER, #10	2
44	GK-112-094	ROUND HEAD SCREW, 10-32 x 7/16"	2
45	GK-202-012	WIRING HARNESS (FWD & REV) (NOT SHOWN)	

PARTS BREAK DOWN FOR A "KAT" UPPER HOUSING ASSEMBLY

DRAWING NUMBER: GK-191-P-330

ITEM	PART NUMBER	DESCRIPTION	QTY
1	GK-191-P-006	"KAT" CONTROL HOUSING	1
2	GK-171-029	HANDLE	1
3	GK-112-069	ROUND HEAD SCREWS, 10-32 x 5/8"	6
4	GK-112-068	ROUND HEAD SCREWS, 10-32 x 7/8"	2
5	GK-120-052	DRIVE SCREW, #2 x 3/16"	2
6	GL-190-002	SERIAL NUMBER NAMEPLATE	1
7	GK-155-004	HOLE PLUG, 1"Ø	2
8	GK-148-017	LOCK NUT	1
9	GK-148-015	STRAIN RELIEF	1
10	GK-156-047	CONNECTOR	1
11	GK-171-032	POWER CORD (SPECIFY VOLTAGE) (NOT ALWAYS SUPPLIED WITH PLUG)	1
12	GK-141-014	FLAT HEAD SCREW, 6-32 x 5/16"	4
13	GSP-2000-1	GSP MOTOR CONTROL ASSEMBLY (Extended Button, Recessed Selector) (Standard)	1
	GSP-2001-1	GSP MOTOR CONTROL ASSEMBLY (Recessed Button, Recessed Selector) (Optional)	
	GSP-2010-1	GSP MOTOR CONTROL ASSEMBLY (Extended Button, Extended Selector) (Optional)	
	GK-191-P-039	ELECTRICAL ASSEMBLY (ITEMS 14-23 & ITEMS 33-35)	1
14	GK-141-019	FLAT HEAD SCREW, 10-32 x 3"	1
15	GK-191-P-218	TRANSFORMER MOUNTING RUBBERS	1 PR
16	GK-191-P-019-A	TRANSFORMER, 42 V INPUT	1
	GK-191-P-019-B	TRANSFORMER, 115 V INPUT	
	GK-191-P-019-C	TRANSFORMER, 230 V INPUT	
17	GK-112-054	ROUND HEAD SCREW, 10-32 x 1/2"	1
18	GK-191-P-020	BRIDGE RECTIFIER	1
19	GK-191-P-021	TRANSFORMER MOUNTING BRACKET	1
20	GK-191-P-063	CAPACITOR CLIP	1
21	GK-111-068	FLAT WASHER, #10	1
22	GK-112-065	ROUND HEAD SCREW, 10-32 x 3/8"	1
23	GK-191-P-062	CAPACITOR	1
24	GK-112-089	ROUND HEAD SCREW, 8-32 x 1/4"	1
25	GK-191-P-071	OPTIONAL ARC SIGNAL RELAY KIT	
26	GK-155-002	HOLE PLUG, 7/8"Ø	1
27	GK-165-134	FUSE HOLDER ASSEMBLY	1
28	GK-165-098	SLOW BLOW FUSE, 42 V INPUT USE 5 AMP	1
	GK-165-099	SLOW BLOW FUSE, 115 V INPUT USE 2.5 AMP	
	GK-165-097	SLOW BLOW FUSE, 230 V INPUT USE 1.25 AMP	
29	GK-191-P-022	POWER ON/OFF SWITCH	1
30	GK-191-P-050	ON/OFF NAMEPLATE	1
31	GK-129-014	LOCK WASHER	1
32	GK-191-P-056	SWITCH NUT	1
33	GK-191-P-103	DISCHARGE RESISTOR & CAP. WIRING HARNESS (Not shown on drawing)	1
34	GK-191-P-127	HIGH FREQUENCY CAPACITOR HARNESS (Not shown on drawing)	1
35	GK-191-P-140	CAPACITOR TO "KAT" CONTROL HARNESS (Not shown on drawing)	1
36	GK-191-P-128	LINE CORD CONNECTION HARNESS (Not shown on drawing)	1

SPECIFY "KAT" MODEL NUMBER AND SERIAL NUMBER WHEN ORDERING PARTS.

PARTS BREAK DOWN FOR A "KAT" UPPER HOUSING ASSEMBLY

DRAWING NUMBER: GK-191-P-330

